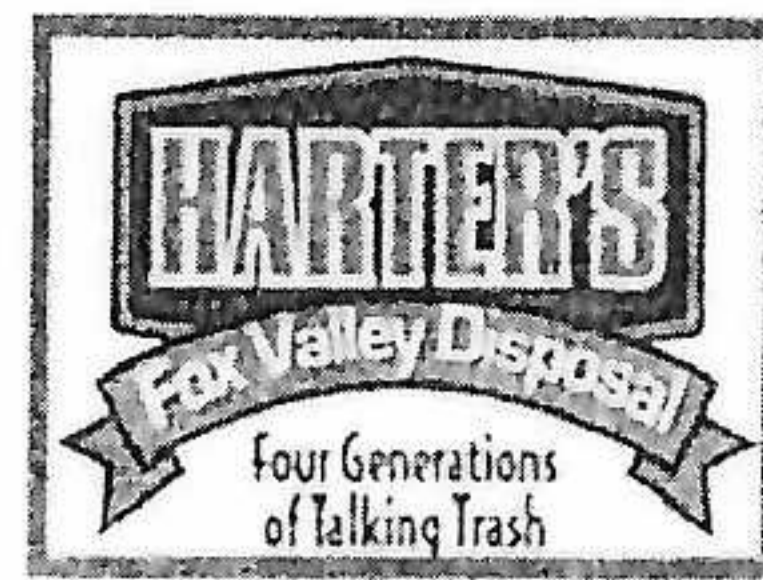


Town of Cassel Residents



Direct: (715)446-5400
Toll Free: (888)804-8556
Fax: (715)446-5410
Email: arfoxvalley@harters.net
Web: www.hartersfvd.com

Welcome to your trash and recycle cart!

In an effort to keep our communities clean and create more efficient collection routes, your municipality is moving to automated trash and recycle collection using new carts. The lidded cart keeps materials dry and from blowing out on windy days. The carts are also designed to easily roll to the street or road. Further, the automated collection system increases the level of safety for route drivers.

Do I now have a new pick-up schedule and when can I start using my carts?

Your first pick-up day will be Wednesday, April 7th.

(1) 95-gallon trash cart (blue cart with BLACK lid)

(1) 95-gallon recycling cart (blue cart with GREEN lid)

Can I place my recyclables in plastic bags?

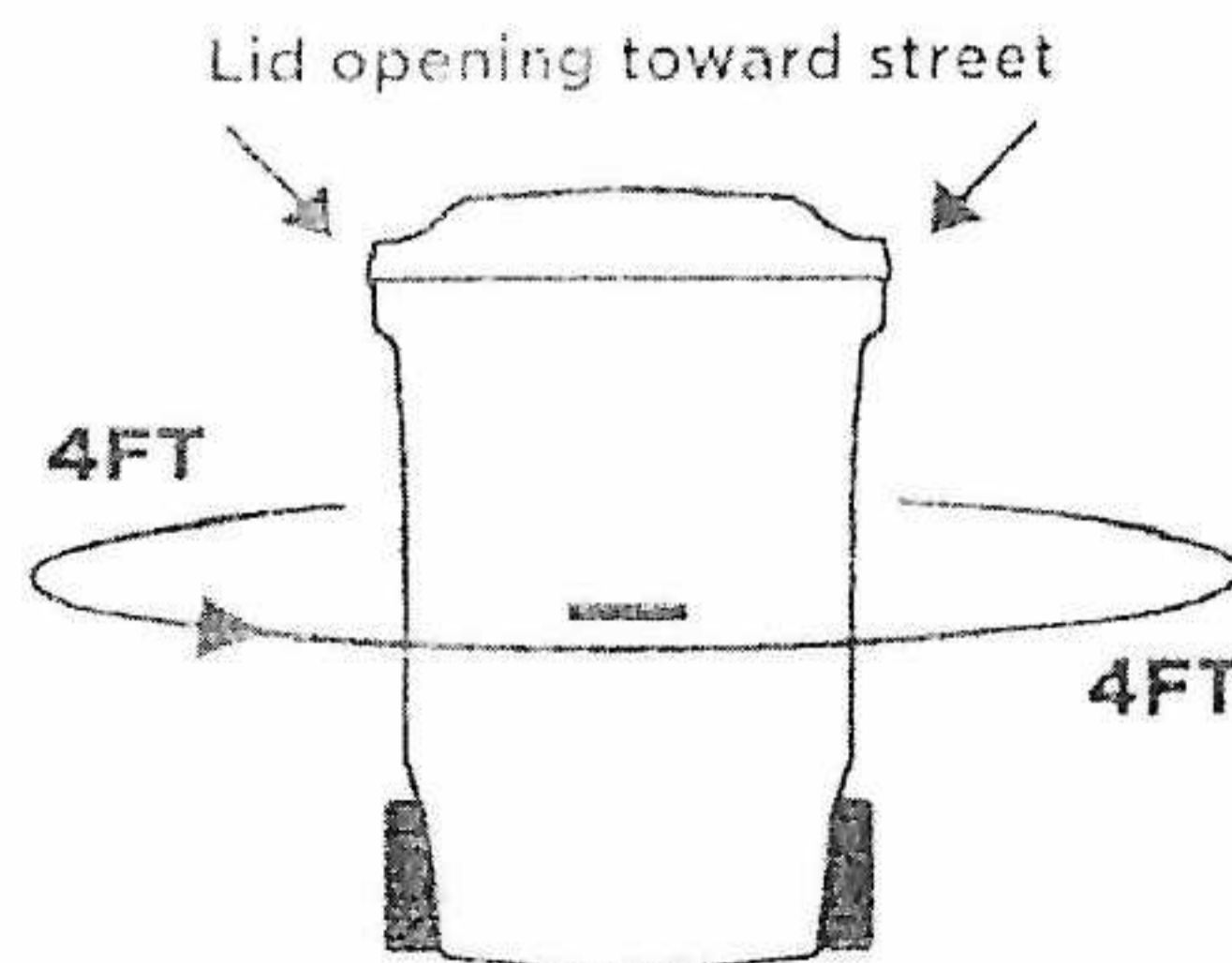
NO, DO NOT place recyclables in plastic bags or put bags-of-bags in your cart. For information on local grocery and retail stores that accept shopping bags and other stretch film plastic for recycling, go to RecycleMoreOutagamie.org.

What should I do if my trash and recycle does not fit in my cart?

- Save them for your next collection day.
- Ask a neighbor if they have extra room in their cart for your trash or recycle.
- Call Harter's to rent an additional trash or recycle cart for a yearly fee.

Can I take my carts with me if I move?

No. Each cart should stay with the property. These carts are the property of Harter's, for cart repair or rental of additional cart; please call (715) 446-5400 or (888) 804-8556.



How do I set my cart out on collection day?

Place your cart curbside before 6am the day of collection, with the cart's handle facing your house and the lid opening toward the street. All solid waste MUST be bagged. Make sure there is at least four feet between the recycling and trash carts, and any other objects, such as a parked car or mailbox. Note, if your carts were set out late, you must wait until your next scheduled pick-up.

What if there is a snow bank?

In the case of snow, if your cart will not fit in your driveway opening, then you will need to clear an opening in the snow bank where the cart can be properly placed. Carts cannot be placed on top of the snow bank or in the road. Improperly placed carts will not be collected.

What if I have items that don't fit in my cart?

Large Household items will be collected on every other week at the expense of the resident. Furniture (i.e. couch, table, dresser, bed frame, mattress, box spring, bike, push mower (no gas/oil), toilet, sink), Electronics (i.e. stereo, printer, monitor, CPU tower) or Non-Freon Appliances (i.e., stove, microwave, washer, dryer, compactor, dishwasher, humidifier, water heater, water conditioner) and Freon Appliances (i.e., refrigerator, dehumidifier, freezer) and TV's. Residents are to call Harter's at (715) 446-5400 or (888) 804-8556 to schedule their large item pick up and for pricing, payment is required before pick-up. The cut off will be 2:00 p.m. the day prior to pick-up day.

How do Holiday's affect my pick-up?

Holiday collection will be delayed one day, if the Holiday is on a weekday before your pick-up day. Holidays are New Year's Day, Memorial Day, Independence Day, Labor Day, Thanksgiving and Christmas Day.

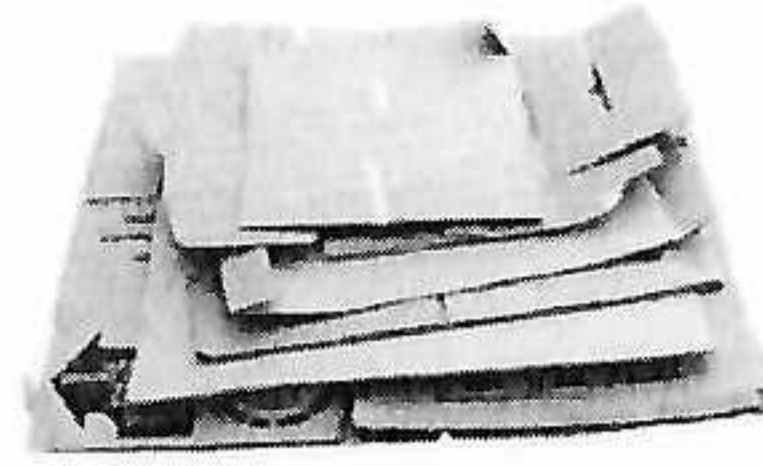
TO BIN. (RECYCLE CURBSIDE)



Aluminum & Steel Cans, Glass Bottles & Jars (empty & rinsed, labels can stay on)



Mixed Paper, Newspaper, Magazines, & Unwanted Mail



Cardboard (flattened)



Plastic Kitchen, Laundry & Bath Containers (empty, with cap on)



Do Not Bag Recyclables
No Garbage



No Plastic Bags or Plastic Wrap (return to retail)



No Food or Liquid (empty all containers)



No Clothing or Linens (use donation programs)



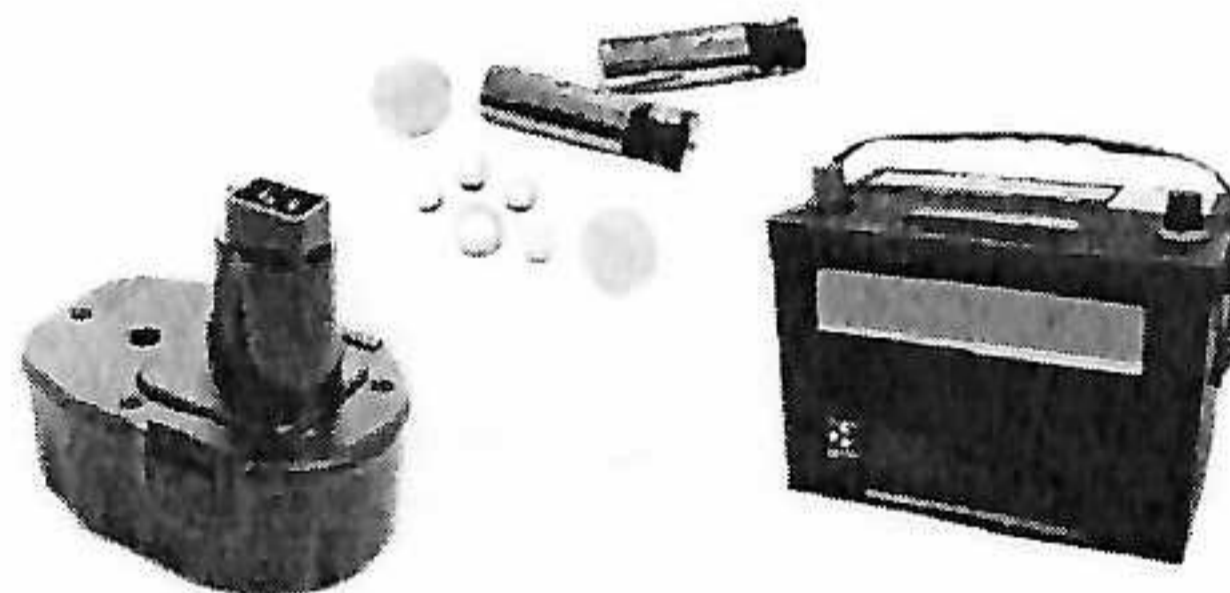
No Tanglers (no hoses, wires, chains, or electronics)

NOT TO BIN. (DROP-OFF ONLY RECYCLING)

Fees are associated with some of these materials to cover the cost of proper disposal.



Antifreeze, Used Oil, & Oil Filters (2.5 gallon containers or smaller, no rags or debris)



Batteries (tape terminal ends)



Plastic Film & Bags



Electronics



Scrap Metal



Bulbs, Lamps, & Ballasts



Tires



Appliances

cwrecyclingcollective.com
Toll-free: 877-270-3989

CENTRAL WISCONSIN
RECYCLING
—COLLECTIVE—

Brought to you by:



RECYCLING CONNECTIONS